

Alubond

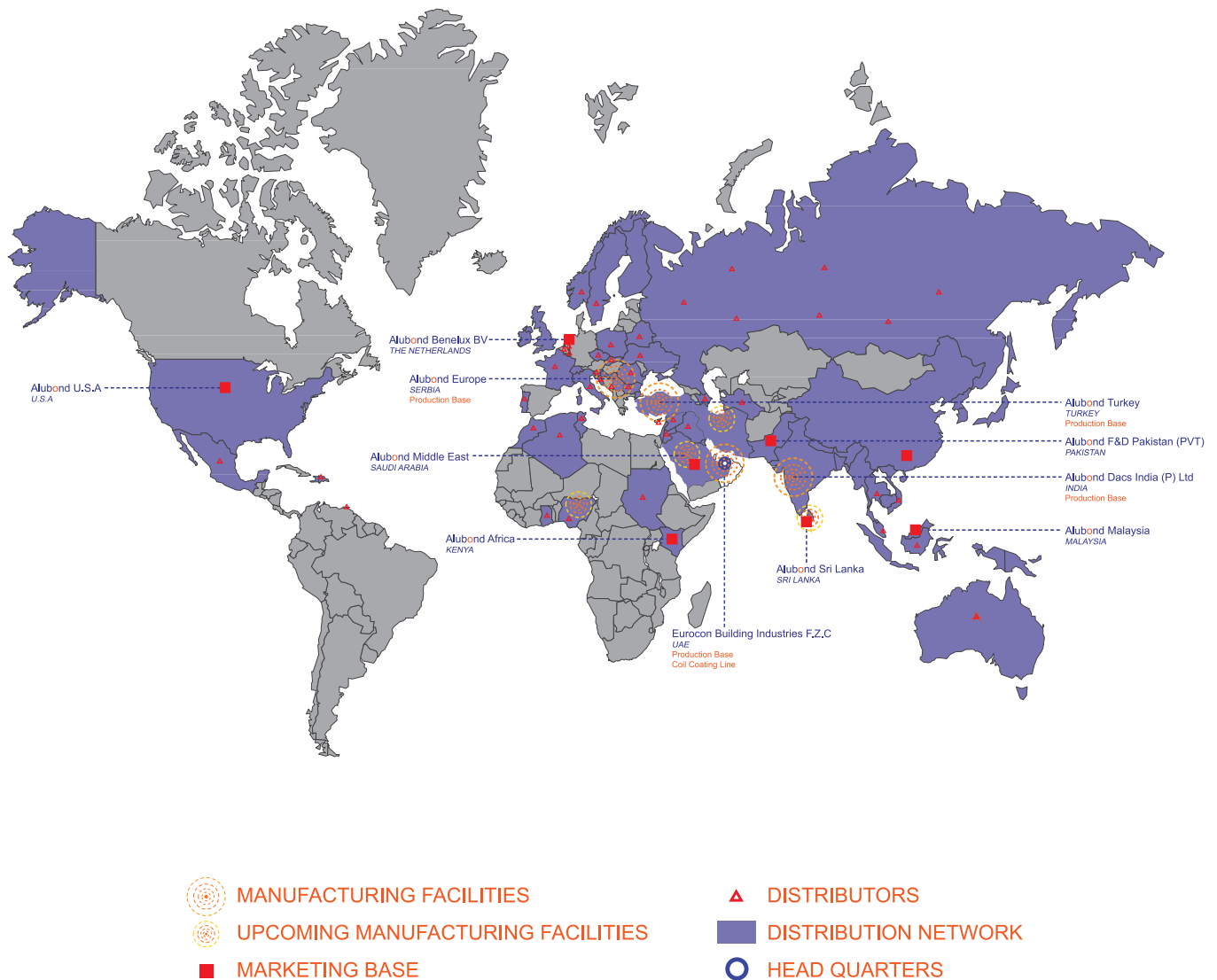
U.S.A

Fire Rated Metal Composites



COLOR
CHART

Alubond Global Presence



The World's Largest Metal Composite Brand

ALUBOND U.S.A WORLD WIDE PROJECTS

ALUBOND U.S.A has been the face of iconic projects Worldwide extensively specified by World Renowned Architects as their choice for exterior façades and interior ceilings and wall linings. The tallest tower in the world Burj Khalifa by Skidmore, Owings and Merrill (SOM), The Address Hotel by W.S Atkins, The Formula One Yas Island by Burt Hill, Index Tower by Sir Norman Foster, Infosys Training Centre by Hafiz Contractor, International Airports of Dubai, Sharjah, Hyderabad, Mumbai, Cairo, Sharm Al Sheik, Khartoum by Dar Al Handasah and other International Architects are some of the selected project references.



Nasir Tower, Sharjah



Sharm El Sheikh Airport, Egypt
Dar Al Handasah



African Development Bank



Infosys Training Centre
India

ALUBOND U.S.A APPLICATIONS

Alubond's array of colors and finishes combined with the inherent capability of forming different shapes and contours with durability and weather resistance makes Alubond an Architect's Dream. Major Corporations and Multi National Companies have a definitive desire to make their structures an expression of Personal Designer Statement. Alubond U.S.A becomes a natural choice to achieve this objective. The possible applications are limited to the architect's imagination. The versatility of Alubond U.S.A Metal composite panels allow the product to have conventional as well as Exotic Applications.



BUILDING FACADE



ACOUSTIC MACHINE COVERS



FIRE RATED DOORS



CEILINGS AND INTERIORS



BATHROOMS



TRANSPORT



SOLAR MIRRORS



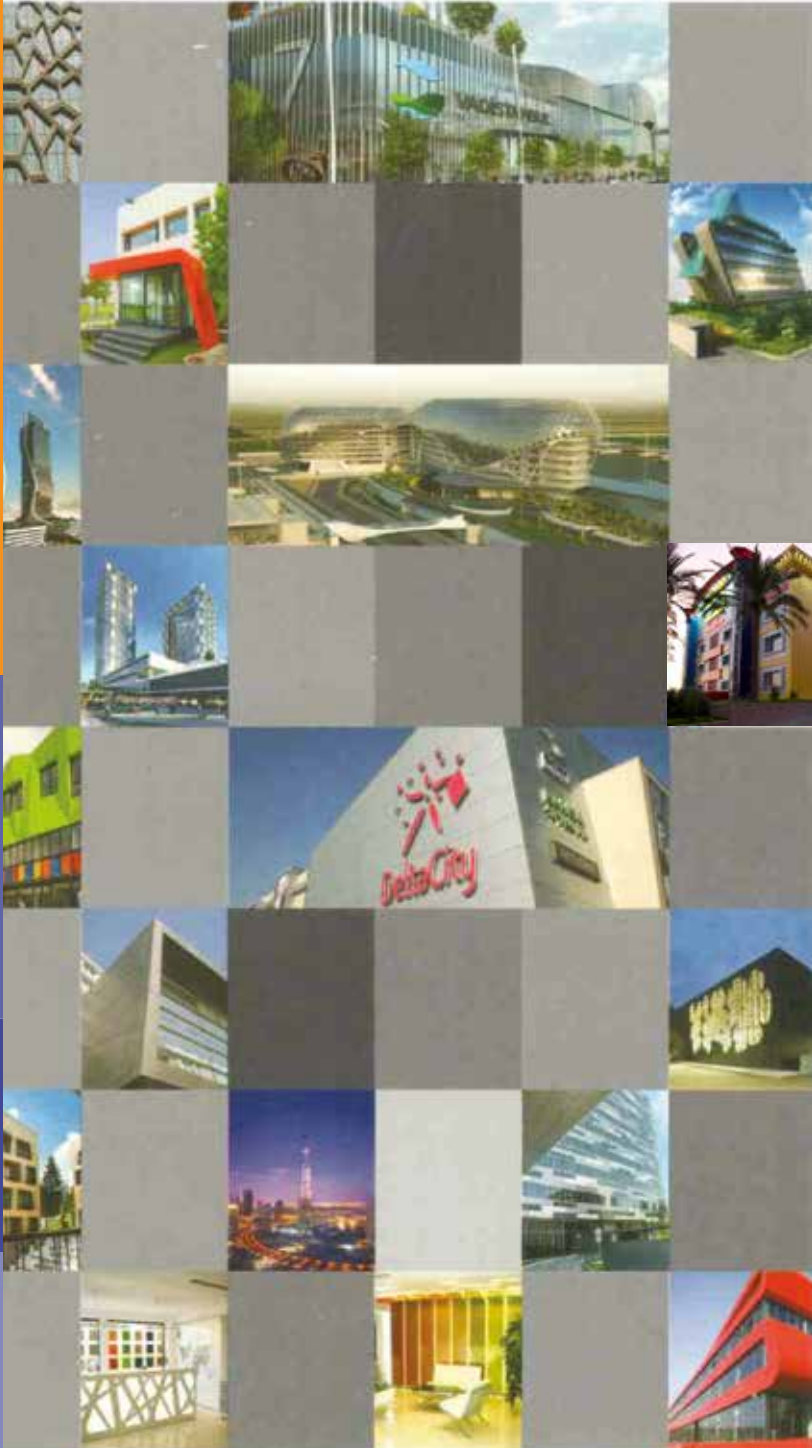
YACHT INTERIORS



CAR PARK GRILLS



APPLICATIONS



OUR PRODUCTS

• ACCORDING TO THE REACTION TO FIRE CLASS

- FR-A2** - EN 13501-1 - Class A2
ASTM E84 - Class A - Core Exposed
NFPA 285 Meet The Requirements
- FR-B1** - EN 13501-1 - Class B
ASTM E84 - Class A - Core Exposed
NFPA 285 Meet The Requirements
- FR-B2** - EN 13501-1 - Class E
DIN4102-1 - Class B2
ASTM E84 - Class A
BS 476 Part 6&7 : Class 0 & Class 1
NFPA 259 Meet The Requirements

• OUR RANGE OF COMPOSITE SHEETS ARE :-

Aluminum
Stainless Steel
Copper
Zinc
Titanium



Alubond Metallic Colors



ALM-101 BRIGHT SILVER



ALM-102 CHAMPAGNE GOLD



ALM-103 METALLIC BRASS



ALM-104 GRAY METALLIC SILVER



ALM-106 METALLIC JADE



ALM-107 CHAMPAGNE SILVER



ALM-108 METALLIC BRONZE



ALM-109 METALLIC GOLD



ALM-110 BRUSHED SILVER



ALM-112 DESERT ROSE METALLIC



ALM-113 BLUE METALLIC



ALM-115 BRIGHT
CHAMPAGNE SILVER



ALM-121 RAW GREY



ALM-133 SMOKE SILVER



ALM-143 METALLIC BLACK

Color variation may occur between panels from different production batches. If color consistency is required, do not mix different batches. Please order the total requirements for one particular building in a single order for metallic and effect colors, an optical change of color shade may occur due to the metallic particles of these lacquers. To avoid possible reflection differences, it is imperative to install the panels in the same direction as marked on the protective film.



ALUBOND U.S.A TOTAL SOLUTIONS

ALUBOND U.S.A Total solutions concept is designed to offer a complete Turnkey package of engineering, supply and installation of Alubond U.S.A Fire rated Metal Composites / Alubond U.S.A Solid Aluminum panels using an open joint silicon free ventilated Substructure system with a full system warranty of 10 years.



The Total Solutions concept includes services from façade engineering, onsite building survey, engineering drawings of project specific fixing details, structural analysis of full system of panels with ABTI substructure, fabrication of panels and substructure, supply of full system including accessories to site, installation services by approved installers, Alubond U.S.A approval of installed system and release of 10 years warranty for the full system.



Alubond Solid Colors



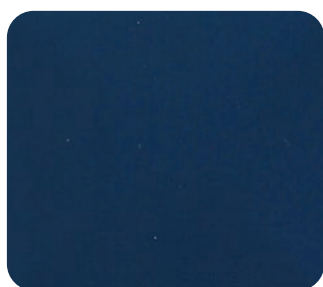
ALS-117 YELLOW



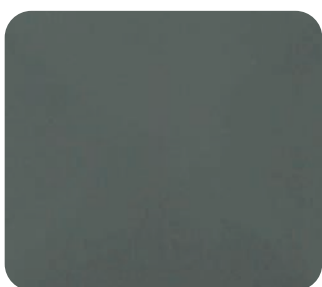
ALS-118 SIGNAL RED



ALS-119 SEA BLUE



ALS-120 DARK BLUE



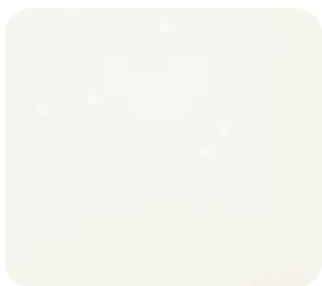
ALS-122 RAT GREY



ALS-125 WHITE



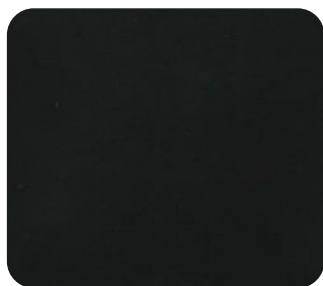
ALS-126 APRICOT WHITE



ALS-127 IVORY WHITE



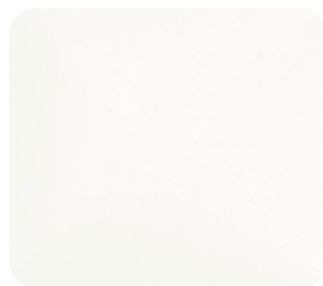
ALS-128 PURE WHITE



ALS-130 COAL BLACK



ALS-137 BURGUNDY



ALS-140 BONE WHITE



ALS-142 PURPLE BLUE



ALS-377 ORANGE



ALS-430 CREAM WHITE

Color variation may occur between panels from different production batches. If color consistency is required, do not mix different batches. Please order the total requirements for one particular building in a single order for metallic and effect colors, an optical change of color shade may occur due to the metallic particles of these lacquers. To avoid possible reflection differences, it is imperative to install the panels in the same direction as marked on the protective film.



GROZNY CITY RESIDENTIAL BUILDINGS



HILTON HOTEL



WEST GATE



ISTANBUL BLOOM RESIDENCE



GROZNY CITY RESIDENTIAL BUILDINGS



HOLIDAY HOTEL INN -ABU DHABI



DUBAI METRO STATION

Alubond Wood Colors



ALW-314 WHITEAHORN



ALW-321 ORIENTAL CANE



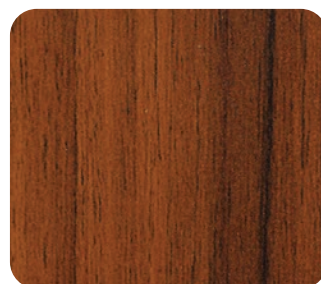
ALW-322 NATURAL OAK



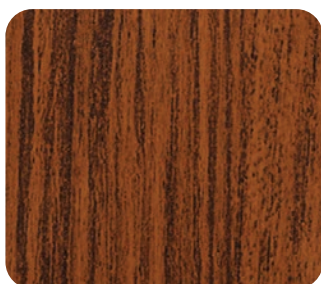
ALW-301 WALNUT



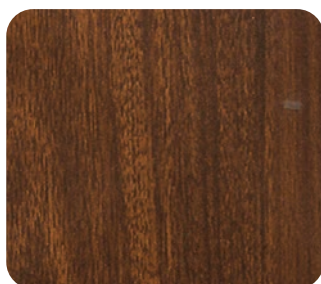
ALW-316 ROSEWOOD



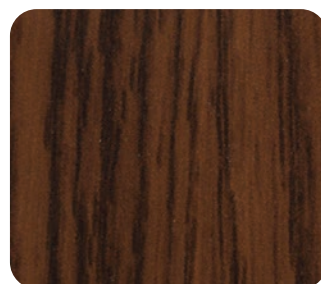
ALW-323 ROYAL TEAK



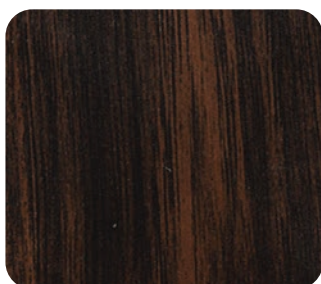
ALW-320 TEAK



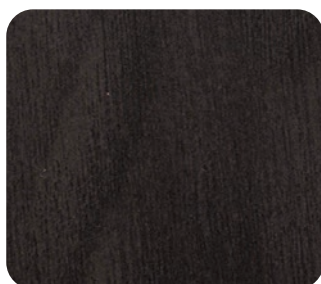
ALW-319 DARK TEAK



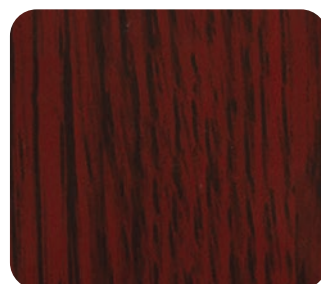
ALW-317 QUERCUS



ALW-315 WENGE



ALW-309 ROYAL WENGE



ALW-304 MAHOGANY



AĞAOĞLU MY HOME



INDEX TOWER



AL-BATEEN TOWER-DUBAI



JW MARIOTT MARCQUIS-UAE



SADA PACK COMPANY LEBANON

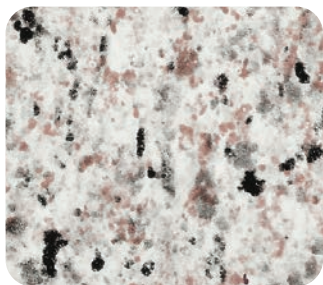


FOLKART TOWERS

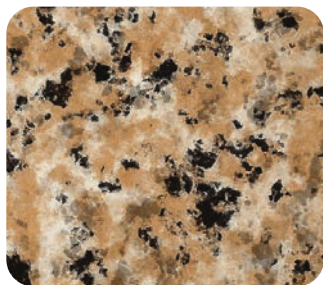


QUIPCO TOWER

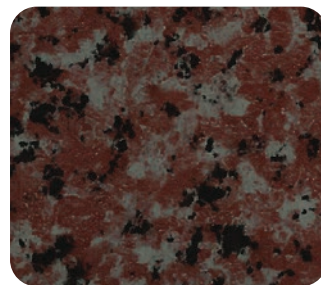
Alubond Stone Colors



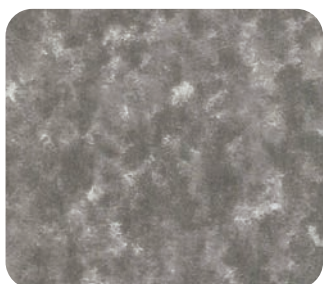
ALG-212 WHITE GRANITE



ALG-214 YELLOW GRANITE



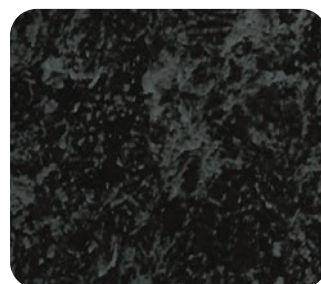
ALG-201 ROSA PORRINHO



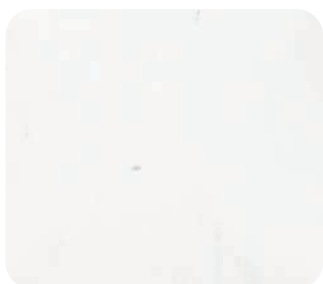
ALG-211 ROSA GRANITE



ALG-208 SERPEGIANTE



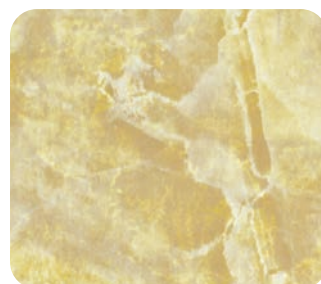
ALG-202 GRANITE NERO



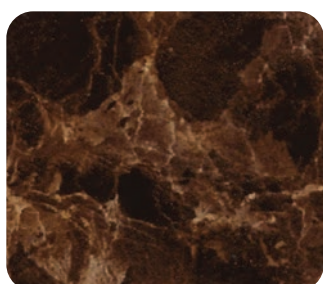
ALG-215 WHITE MARBLE



ALG-206 TRAVERTINE



ALG-216 YELLOW MARBLE



ALG-203 CAFFE MARNO



COPPER PANELS - ITALY



MEDIPOL HOSPITAL



CSG HET STREEK



AÇAOĞLU 212 HOTEL



DATACENTER RABOBANK THE NETHERLAND



PODCETRTEK



NAC- MUNICIPAL BUILDING



INFOSYS, PUNE



YAS HOTEL

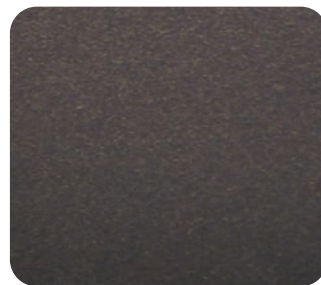
Alubond Prismatic Colors



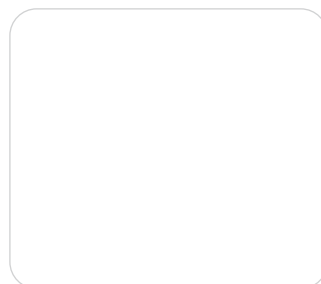
ALP - 401 PRISMATIC VIOLET



ALP - 402 PRISMATIC WHITE



ALP - 404 PRISMATIC GREY

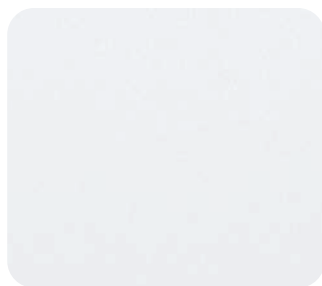


ALP - 405 PRISMATIC OLIVE

Alubond Sparkling Colors



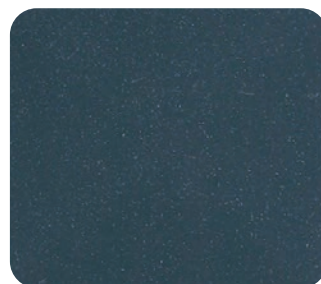
ALK - 501 SPARKLING BLACK



ALK 502 SPARKLING WHITE



ALK - 504 SPARKLING GOLD



ALK - 505 SPARKLING GREY



FOURWINDS



ARISTA LIFE



MD ENTERTAINMENT HEAD QUARTER



NAMASTE TOWER



SHERATON HOTEL



RED STRIPE

Alubond Anodized Series



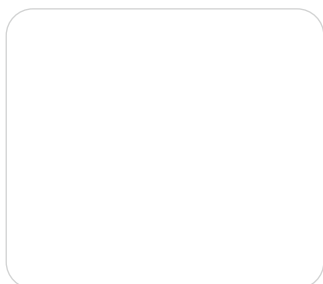
ALM-801 BRUSH



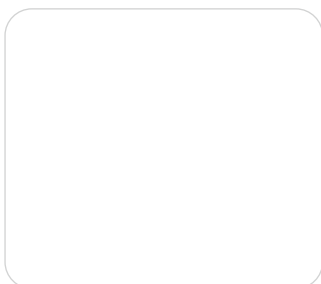
ALM-802 TI-LOOK



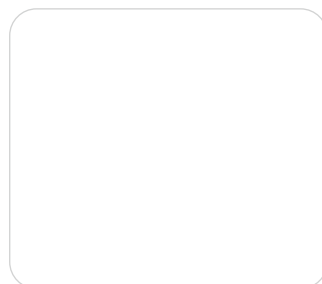
ALM-900 GOLD 20



ALM-902 BRONZE 60



ALM-903 BRONZE 40



ALM-905 BRONZE 55

Alubond Mirror Effects



ALR-601 HIGH MIRROR



ALS-447 GOLD MIRROR



ALS-340 SOLAR SILVER MIRROR



ALS-362 SOLAR GOLD MIRROR

Interior

Exterior

Color variation may occur between panels from different production batches. If color consistency is required, do not mix different batches. Please order the total requirements for one particular building in a single order for metallic and effect colors, an optical change of color shade may occur due to the metallic particles of these lacquers. To avoid possible reflection differences, it is imperative to install the panels in the same direction as marked on the protective film.

ALUBOND U.S.A

PRODUCT DETAILS

PRODUCT ADVANTAGES

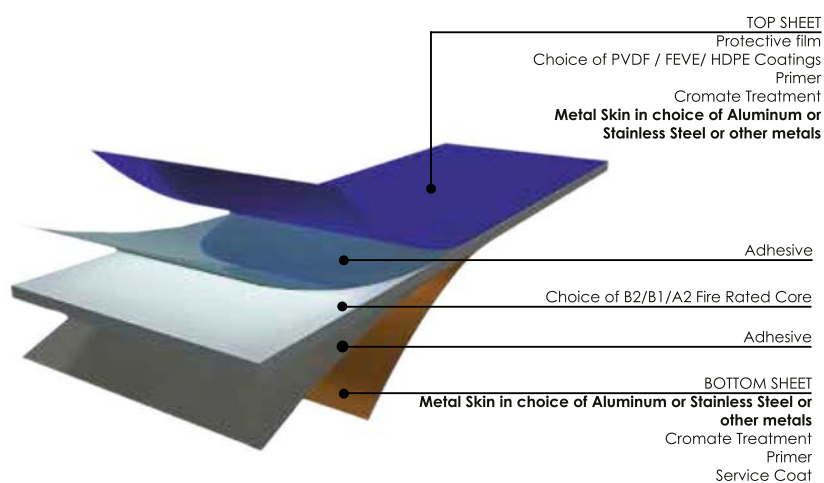
LIGHTWEIGHT, yet extremely rigid and flat resulting in an economical option for high quality building facades and interior cladding.

WEATHER RESISTANCE combined with high acoustics, Thermal and Fire rated values.

EXTENSIVE CHOICE of finishes including Solid, Metallic, Granite, Veneer, and Chameleon Colors.

HIGHLY MALLEABLE gives flexibility of shapes making it a versatile panel to achieve complex design solutions.

PRODUCT COMPOSITES



PANEL DIMENSIONS

| | |
|-------------------------|----------------------------|
| STANDARD WIDTH | 1250mm |
| AVAILABLE WIDTH | 1000 mm, 1500mm, 1800 mm |
| STANDARD LENGTH | 3200 mm, 4000 mm |
| AVAILABLE LENGTH | Custom order upto 11000 mm |
| AVAILABLE THICKNESS | 3mm , 4mm , 5mm, 6mm |
| AVAILABLE SKIN THICKNES | 0.3mm - 0.5mm |

* Note : FR A2 Max Width 1500 mm

PANEL TOLERANCE

| | |
|---------------------------|--|
| LENGTH | ± 4 mm |
| WIDTH | ± 2 mm |
| THICKNESS | ± 0.2 mm upto 4 mm, ± 0.3 mm upto 6 mm |
| BOW (LENGTH AND OR WIDTH) | Maximum 0.8% |
| SQUARENESS | Maximum 5 mm |
| SKIN THICKNESS | As per International Standards |

Alubond Nano Colors



ALM-101 BRIGHT SILVER



ALM-107 CHAMPAGNE SILVER



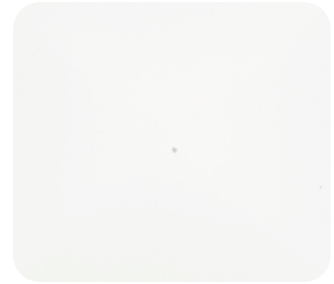
ALM-121 RAW GREY



ALM-143 METALIC BLACK



ALS-118 SIGNAL RED



ALS-128 WHITE



ALS-130 COAL BLACK



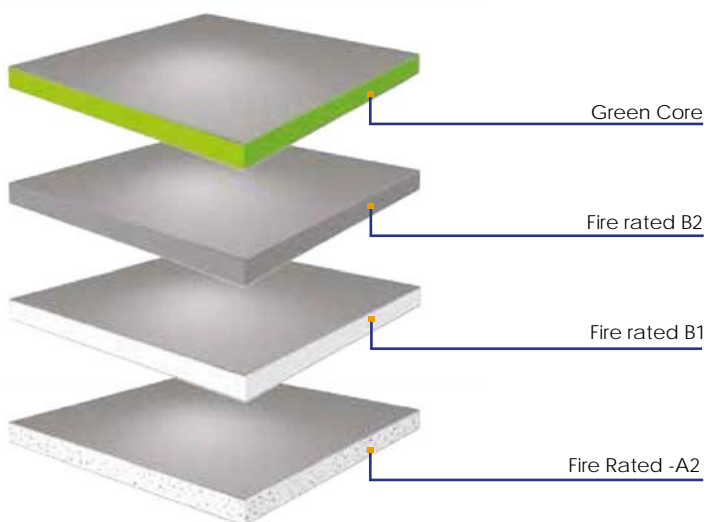
ALUBOND^{U.S.A}

FIRE RATED METAL COMPOSITES

CREATING A SUSTAINABLE FUTURE

ALUBOND^{U.S.A} is a metal composite panel consisting of two layers of a metallic of LDPE skin like **Aluminum, Stainless Steel, Copper, Zinc, Titanium etc.**, sandwiching a fire rated core in a continuous co-extrusion process.

CORE SELECTIONS



Alubond^{U.S.A} is a registered brand of American Building Technologies located in Rockford Illinois with production bases in Europe, Middle East and India. Alubond^{U.S.A} is committed to a sustainable future and is now available in three fire rated cores and an innovative eco friendly green core.

Alubond^{U.S.A} has emerged as The World's Largest ACP Brand with new expansions under progress in U.S.A, Russia, Saudi Arabia and Sri Lanka. The installed production capacity by 2016 shall be over 15,000,000 M² with 10 production lines and two coil coating lines.



ALUBOND U.S.A

FIRE RATED METAL COMPOSITES

SURFACE FINISH:

Alubond U.S.A. Composite sheets are available in PVDF/Lumiflon/HDPE paint systems and can be supplied in any of the paint systems as per the requirement of the customers.

Alubond maintains consistent coating quality through the application of the paints to the Aluminium coil on a continuous coil coating line. Alubond U.S.A. composite sheets are available in Solid colors, Metallic colors, Natural stone & Timber colors, Prismatic and Sparkling colors.

WOOD & STONE SERIES:

Alubond U.S.A. Wood and Stone series composite sheets are developed with state of the art coating technology and with special image transfer process. This coating technology provides excellent natural feel to the surface of the wood/stone series products with outstanding quality.

LONGER DURABILITY:

Alubond U.S.A. anodized Series, which are manufactured with the new generation Eloxal coating process provides a longer durability in exterior environment with its high resistance to all weather conditions and offers a Total Solution to customers.

IMAGINATION:

Alubond U.S.A. Composite sheets offer wide range of colours, choice of surface finishes, products with special patterns and exotic metals which can be used for both interior and exterior environments leaving no limits for imagination for the customers.

OUR PROMISE OF QUALITY:

Alubond U.S.A. is a global brand for the architectural projects and preferred by architects and consultants due to the excellent performance and performance in any kind of weather conditions. Development of innovative product range with highest quality and at most competitive prices provide Alubond the edge over other brands and position Alubond U.S.A. as the leader in the industry.

ALUBOND U.S.A

PROCESSING METHODS

DRILLING



The drilling of Alubond u.s.a ACP panels can be achieved with twist drills normally used for aluminum and plastics on machines common for metals.

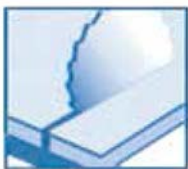
By using high-speed, low feed, occasional raising of the drill and blowing with compressed air, the swarf will be rapidly removed.

WELDING



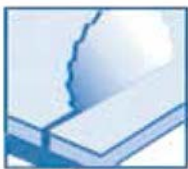
The Alubond u.s.a ACP panels can be successfully welded using polyethylene welding rods and a hot-air gun. Slender pieces of Alubond u.s.a ACP panels can also be used on a welding rod. Reinforcement on the welded joint is recommended.

CUTTING & SAWING



A fine tooth tungsten - carbide tipped (CT) saw blade is the most suitable for cutting Alubond u.s.a ACP panel. Eg. A 60 tooth on 250mm diameter.

CURVING / FOLDING



Using the standard 3004 H14/H16 alloy, Alubond can be curved to the following minimum radii:

Panel Thickness 3mm 4mm and 6mm Radius 120mm 175mm and 275mm Tighter radii can be achieved with other alloys or tempers.

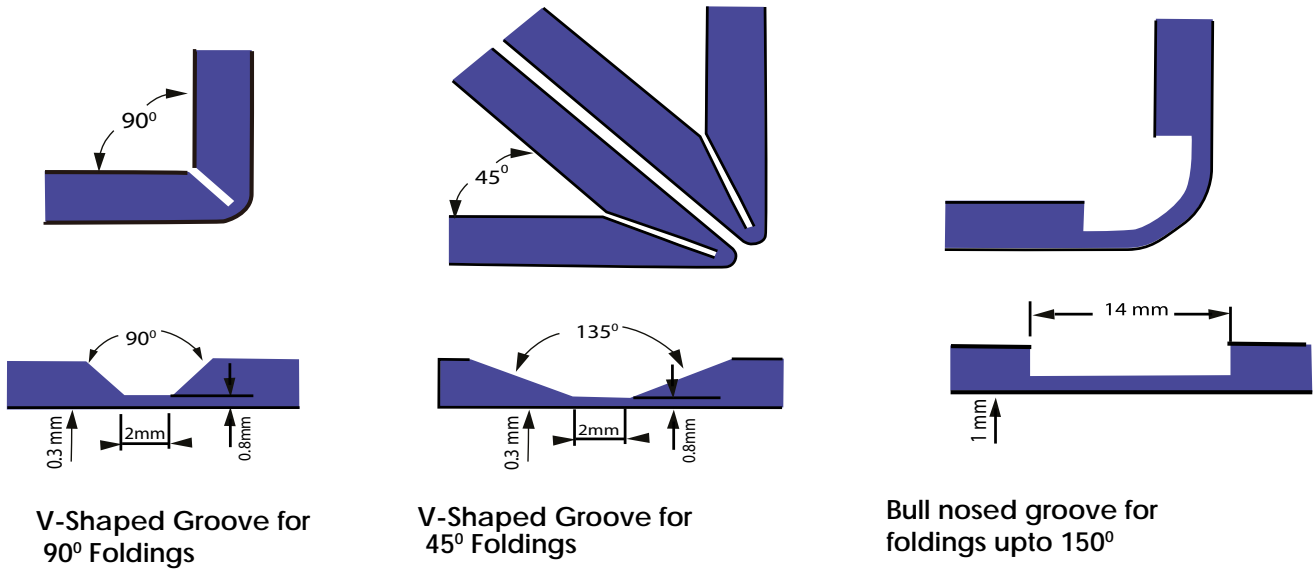
RIVETTING / BOLTING



Use aluminum blind rivet for junction. Fixing work can be done from one direction. Use stainless steel bolt/nut. When panels are connected with junction hole, the equation of $e > 2D$ indicates a suitable relation between the hole diameter (D) and the distance from the hole center to panel end (e), to ensure sufficient tensile strength of the hole.



ALUBOND U.S.A PROCESSING METHODS



Conventional, off the shelf equipment can be used including; universal, vertical and horizontal routing machines.

To avoid pressure marks on the Alubond surface when chucking the work pieces, wooden or plastic shims should be used.

The most suitable cutters for both aluminum and Alubond are high-speed steel or carbon tipped cutters which have a wide tooth spacing, radius and small grooves and small lip angles. These cutters produce perfect cuts under the following conditions:

High Speed Steel (HSS) Cutters

| | | |
|-------------------|---|------------|
| Cutting Speed Max | : | 3000 m/min |
| Feed max | : | 24 m/min |

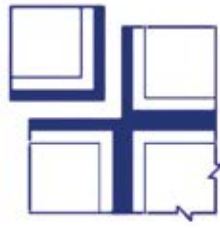
Carbide tipped (CT) Cutters

| | | |
|---------------|---|------------|
| cutting speed | : | 5000 m/min |
| Feed max | : | 30 m/min |

The very simple method of routing makes the shaping ability to Alubond one of its major features. The system allows shapes of various kinds and sizes to be formed out of Alubond. A V-shaped groove is formed in the panel allowing it to be bent without the use of a press brake machine.

ALUBOND U.S.A

PROCESSING METHODS



SHEARING



The shearing of Alubond u.s.a ACP panels can be easily done using rotary shears or a guillotine. To prevent damage to the panel, the hold down on the shear should be fitted with a shock absorbing rubber pad.

PUNCHING



Punching flat-formed parts from Alubond u.s.a is performed in the same way as solid aluminum sheet, using the narrowest possible cutting gap and evenly ground tools.

PLANING & FILLING OF EDGES



When using a jig saw on Alubond u.s.a, swarf is often left behind on the edges of the sheet. For removing this swarf and finishing off the edges, plane cutting files work best. Files with screen-like perforated roots, or tools with very coarse or rasp-like cut are recommended for filing. Through these perforations the swarf will be removed from the tool surface. The file profile should be from slightly to fully rounded. The proper filing direction is lengthways along the edge. When clamping a sheet of Alubond u.s.a between jaws, a shim of wood or plastic will protect the surface against damage.

Substructure Systems for Ventilated facades

Alubond offers state of the art substructure systems for ventilated facades with various cladding options. These systems are developed based on new architectural trends and requirements. Following are the most popular ventilated systems which caught the attention of architects/consultants across the globe and are appreciated for their asthetic expression, easy installation, superior thermal insulation and above all economic pricing.



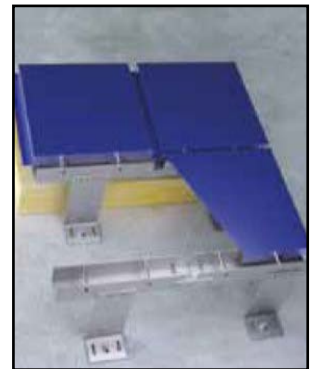
SYSTEM SLIDER



SYSTEM STONE



SYSTEM TACK



SYSTEM BOLT



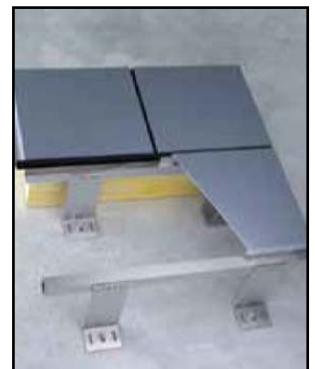
SYSTEM BOX



SYSTEM CONTINUAL



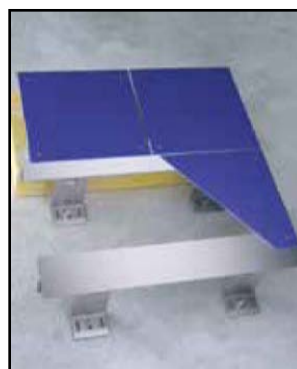
SYSTEM FIT



SYSTEM GASKET



SYSTEM HIDE



SYSTEM RIVET

CONTACT US

Eurocon Building Industries F.Z.C
Mulk Holdings F.Z.C
P.O. Box 42642, Hamriyah Free Zone, Sharjah, U.A.E
Tel : + 971-6-5262202
Fax : + 971-6-5262203
E-mail : info@alubond.com

Alubond Middle East L.L.C
P.O. Box No. 30103, Al Jurf, Ajman, U.A.E
Tel: +971-6-5262202
Fax : +971-6-5262203
E-mail : alubondmiddleeast@alubond.com

Alubond Europe doo
Nemanjina 130,
26320 Banatski Karlovac, Serbia
TIF+381 13 652 852
E-mail: info@alubondeurope.com
Website: www.alubond.com

Alubond DACS India (P) Ltd
Enpar House, Ambika Mills Compound,
Senpati Bapat Marg, Lower Parel,
Mumbai 400013, India
Tel: +91 22 4321 1400
Fax: +91 22 4321 14444
E-mail : alubonddacs@alubond.com

American Building Technologies Inc
6957 Olde Creek Road Rockford, Illinois 61114, U.S.A
Tel : 815 331 4121
Fax : 815 713 4525
E-mail: greeninfo@alubond.com

www.alubond.com



Mulk Holdings



Incorporation Certificate
U.S.A



ASTM E 119
Standard, U.S.A



MPA NRW
Din and EN Standards
Germany



Architectural Testing
ASTM Standards - U.S.A



Intertek
NFPA285
ASTM E84 - CLASS A



Intertek



ME5063 - FR-A2
ME5059 - FR-B
ME5055 - FR-B1
ME5056 - FR
CF5061 - FR-B1
CF5062 - FR-B2